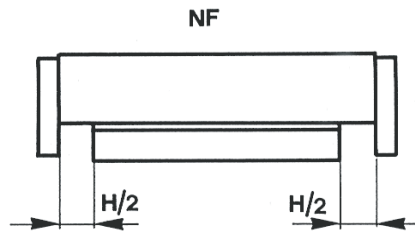
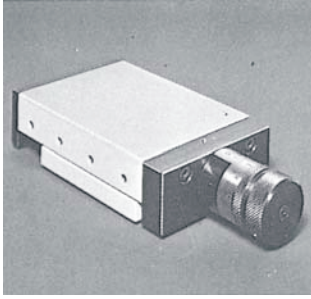


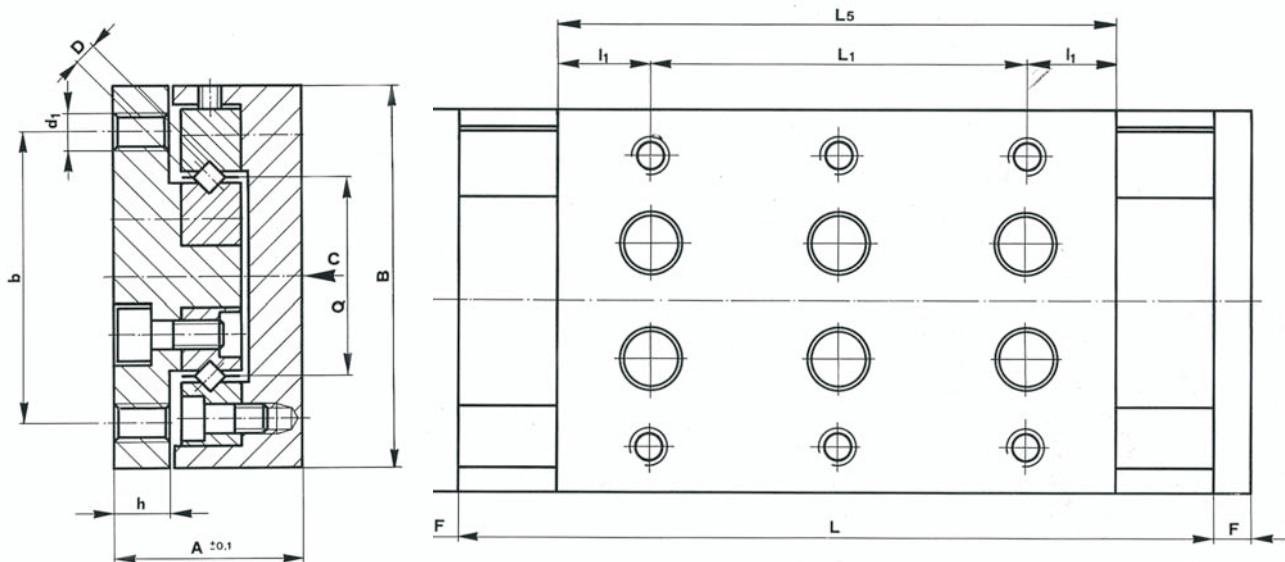
FRICTIONLESS TABLES TYPE NF



Standard Model

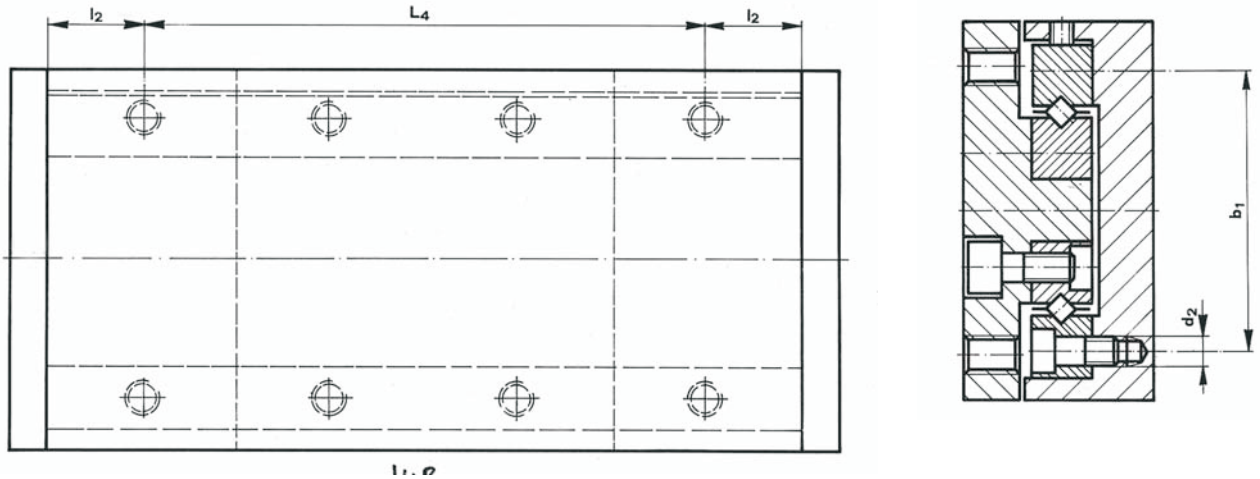
Material : Cast-iron/Steel

The tables are equipped with Type AA/AL cages; for the load bearing cage length see dimension K_t



Order No.	H	A	B	L	L_5	Q	K_t	D	F	l_1	b	d	h	C[N]	[kg]
NF 13 - 75/50	25			75	50		30			1X25				500	0,6
NF 13 - 100/75	25	25	50	100	75	26,5	55	3	5	2X25	12,5	38	M5	750	1,0
NF 13 - 150/100	50			150	100		80			3X25				1000	1,2
NF 23 - 100/75	25			100	75		55			2X25	12,5	52	M5	750	1,6
NF 23 - 125/100	25	32	75	125	100	41	80	3	6	3X25				1000	2,0
NF 23 - 150/100	50			150	100		80			3X25				1000	2,3
NF 33 - 150/125	25			150	125		105			2X40	22,5	77	M6	1250	4,0
NF 33 - 200/150	50	36	100	200	150	66	130	3	6	2X40	35			1500	4,5
NF 33 - 250/200	50			250	200		180			4X40	20			2000	6,0
NF 33 - 300/225	75			300	225		205			4X40	32,5			2250	7,0
NF 46 - 200/150	50			200	150		120			1X75	37,5	118	M8	2400	10,0
NF 46 - 300/200	100	50	150	300	200	99	170	6	8	2X75	25			3200	13,5
NF 46 - 400/300	100			400	300		270			2X75	37,5			5000	18,5
NF 46 - 400/250	150			400	250		220			3X75	50			4000	17,5
NF 56 - 450/300	150	58	200	450	300	139	270	6	8	3X75	37,5	158	M8	5000	30,0
NF 56 - 600/400	200			600	400		370			4X75	50			6500	40,0

FRICTIONLESS TABLES TYPE NF



Size	L ₂	L ₃	L ₄	l ₂	b ₁	b ₂	n	d				
NF 13 - 75/50	126	-----	2X25	12,5	37,4	M3	-----	M6X1				
NF 13 - 100/75	151	-----	3X25									
NF 13 - 150/100	201	-----	5X25									
NF 23 - 100/75	161	189	3X25	12,5	52	M3	20	M8X1				
NF 23 - 125/100	186	214	4X25									
NF 23 - 150/100	211	239	5X25									
NF 33 - 150/125	216	246	5X25	12,5	77	M3	25	M10X1				
NF 33 - 200/150	266	296	7X25									
NF 33 - 250/200	316	346	9X25									
NF 33 - 300/225	366	396	11X25									
NF 46 - 200/150	273	312	3X50	25	118	M5	28	M16X1				
NF 46 - 300/200	373	412	5X50									
NF 46 - 400/300	473	512	7X50									
NF 46 - 400/250	473	512	7X50									
NF 56 - 450/300	533	582	8X50	25	158	M5	41	M16X1				
NF 56 - 600/400	683	732	11X50									

Special Accessories

Threaded Spindle, turned

With graduated drum and lock nut (only NF 13)

Reading accuracy = 0,01 [mm]

⌋ Suffix therefor **G**

Threaded Spindle, turned

With graduated drum and spring-loaded double nut (NF 23 ÷ 56)

Reading accuracy = 0,01 [mm]

(Spindle dimensions see dimension d)

⌋ Suffix therefor **G 1**

Roller Spindle

(Only NF 33 ÷ 56)

⌋ Suffix Therefor **K1**

Threaded Spindle, turned

With graduated drum and spring-loaded double nut with handwheel

Reading accuracy = 0,01 [mm]

(Spindle dimensions see dimension d)

⌋ Suffix therefor **G 1 W**

